



PER MONTH

**£3,350 Per Month**

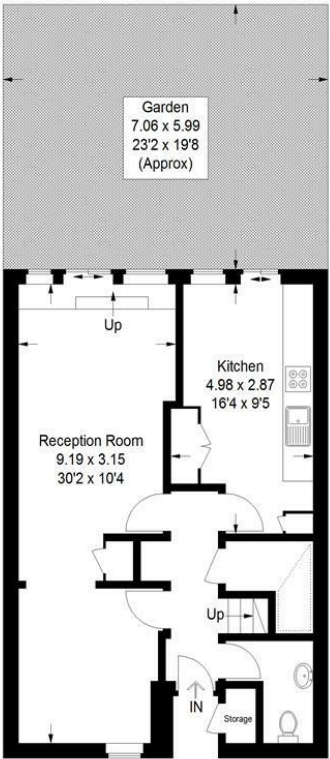
**Limes Walk, Linden Grove**

London, SE15 3LJ

**GARETH  
JAMES**

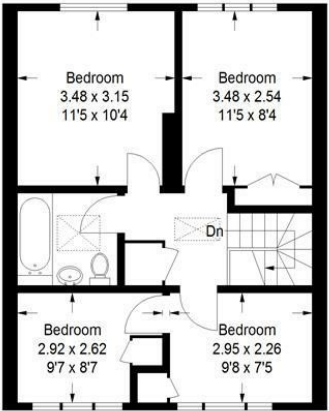
Limes Walk, Linden Grove, SE15

Approximate Gross Internal Area (Excluding External Storage)  
98.5 sq m / 1060 sq ft

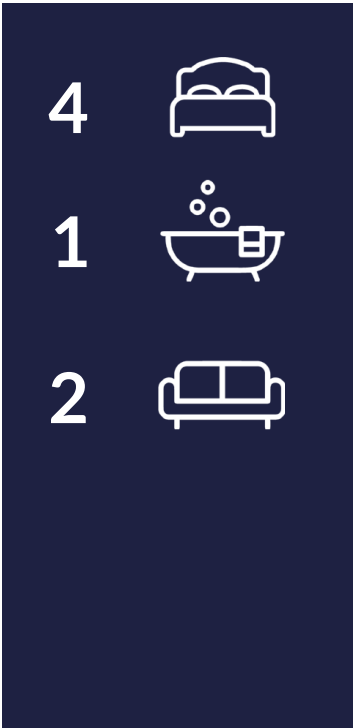


Ground Floor

This plan is for layout guidance only. Not drawn to scale unless stated. Windows and door openings are approximate. Whilst every care is taken in the preparation of this plan, please check all dimensions, shapes and compass bearings before making any decisions reliant upon them. (ID1245790)



First Floor



Energy Efficiency Rating		
	Current	Potential
Very energy efficient - lower running costs		
(92 plus) A		
(81-91) B		
(69-80) C		
(55-68) D		
(39-54) E		
(21-38) F		
(1-20) G		
Not energy efficient - higher running costs		
England & Wales	72	
EU Directive 2002/91/EC		



Agents Note: Whilst every care has been taken to prepare these particulars, they are for guidance purposes only. All measurements are approximate and are for general guidance purposes only and whilst every care has been taken to ensure their accuracy, they should not be relied upon and potential buyers/tenants are advised to recheck the measurements

GARETH JAMES

OFFICE ADDRESS  
129 Bellenden Road  
London  
SE15 4QY

OFFICE DETAILS  
02077324330  
lettings@garethjames.com  
<https://www.garethjames.com/>